



CPX80I

5G Industrial Outdoor CPE

CAT20

5G NR/LTE/WCDMA

RS485/RS232

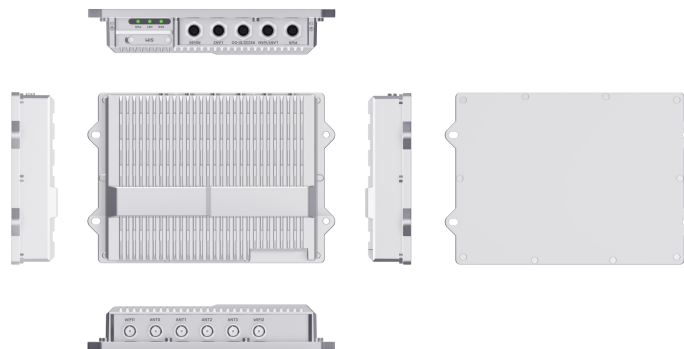
IP67

The CPX80I from BTI WIRELESS is a 5G Industrial Outdoor CPE. It supports various 4G/5G spectrums and ultra-high speed in a ruggedized form factor. This product offers industrial-grade environmental qualifications while providing high speed data services for the bandwidth-intensive applications. Up to IP67 with water-proof, shock-resistant, and lightning-proof, combined to ensure the quality of wireless communication under different outdoor environments.

KEY FEATURES

- Qualcomm SDX55 chipset solution
- 5G NR and LTE-A CAT20 dual mode
- Supports BOTH SA and NSA
- Global/CBRS bands supported
- Ruggedized and anti-vibration design
- Powerful software features, supporting all router features
- Supports Wi-Fi 6
- Web, TR069 and SNMP based device management
- Supports 2.5G WAN/LAN & 1G LAN and diverse industry interfaces
- IP67 rating for outdoor environment

APPEARANCE



HARDWARE SPECIFICATIONS

Module	Quectel RM500Q-GL	
Cellular Bands	5G NR	n1/n2/n3/n5/n7/n8/n12/n20/n25/n28/n38/n40/n41/n48/ n66/n71/n77/n78/n79
	LTE	<u>LTE-FDD</u> : B1/B2/B3/B4/B5/B7/B8/B12/B13/B14/B17/B18/B19/B20/ B25/B26/B28/B29/B30/B32/B66/B71 <u>LTE-TDD</u> : B34/B38/B39/B40/B41/B42/B43/B46/B48
	WCDMA	B1/B2/B3/B4/B5/B8/B19
GNSS	GPS/GLONASS/BeiDou/Galileo	
WLAN	MIMO 2*2 Wi-Fi 6	
Network Mode	Supports SA/NSA	
External Port	1 x M12 for power supply	
	1 x M12 for 10/100/1000Mbps compatible GE port	

	1 x M12 for 2.5GHz GE port 1 x M12 for RS232 + 2 x DI + 2 x DO 1 x M12 for RS485 2 x Nano SIM Slot (4FF, Dual SIM Single Active)
Antenna Port	3 x TNC connector for NR<E antenna 1 x TNC connector for NR<E&GNSS antenna 2 x TNC connector for 2.4&5GHz Wi-Fi antenna
LED Indicators	1 x power indicator 1 x network status indicator 1 x RSSI indicator
Button	1 x reboot or restore button
MIMO	DL 4*4 MIMO UL 2*2 MIMO
ENDC	Supported
Tx/Rx	2Tx/4Rx (n41/n77/n78/n79) 1Tx/4Rx (other LTE/NR bands)
Power Supply	DC 12~36V
Power Consumption	< 24W
Dimensions	250 x 171 x 61mm 9.84 x 6.73 x 2.40 in
Weight	≈2KG 4.41 lbs
Humidity	Operation/Storage: 5% - 95% (non-condensing)
Temperature	Operating temperature: -40 °C ~ +70 °C -40 °F ~ +158 °F Storage temperature: -40 °C ~ +85 °C -40 °F ~ +185 °F

SOFTWARE SPECIFICATIONS

Data Services	4 x APNs
	Multiple PDN
	IPV4/IPV6 compliance
LAN	IEEE 802.1Q VLAN
	DHCP V4/V6
	DNS and DNS proxy
	DMZ
	UPNP
	ALG
	ARP/ICMP/IGMP
	MAC address filtering
Management	Version management: Image checksum
	HTTP/FTP auto-upgrade
	TR069 Upload/ Download the ACS specified file

		Download the configuration file	
		Configure & queries parameters	
		Remote upgrade	
		Remote debugging operations	
		Cycle monitor	
	SNMP		
	WebGUI/ CLI		Various level of user login priority with different limitation and display
			Encryption backup current settings and restore the backup settings
			Export current diagnosis results and operation logs
			Statistics of LAN link status, transmit and receive traffic and up time
	Diagnostics		
	USIM PIN management and card authentication		
	USIM activation		
	NAT/Bridge mode		
Port mirror/Port forwarding			
VPN & Routing	Static Routing		
	IPSec		
	PPTP		
	GRE tunnel		
	L2TP V2/V3		
Security	Firewall		
	Mac address filtering		
	IP address filtering		
	URL filtering		
	Access control		
	HTTPS login from WAN		
	DDOS attack protection		
	Hierarchical user management		

COMPLIANCE SPECIFICATIONS

Environment Compliance	Protection rating: EN60529:IP67
	Salt mist: IEC68-2-11,72H
	Shock: IEC60068-2-27/EN50155/EN61373
	Free Fall: IEC60068-2-32 (1 meter height with package)
	Vibration: IEC60068-2-6/EN50155/EN61373

Contact Us

www.btiwireless.com
sales@btiwireless.com