



# CP680

LTE Outdoor CPE

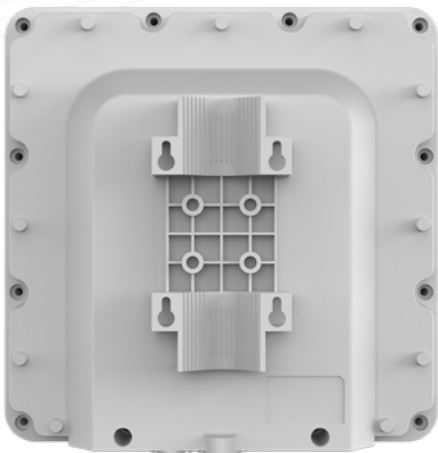
3GPP Release 10/11

CAT6

All LTE Bands

PoE

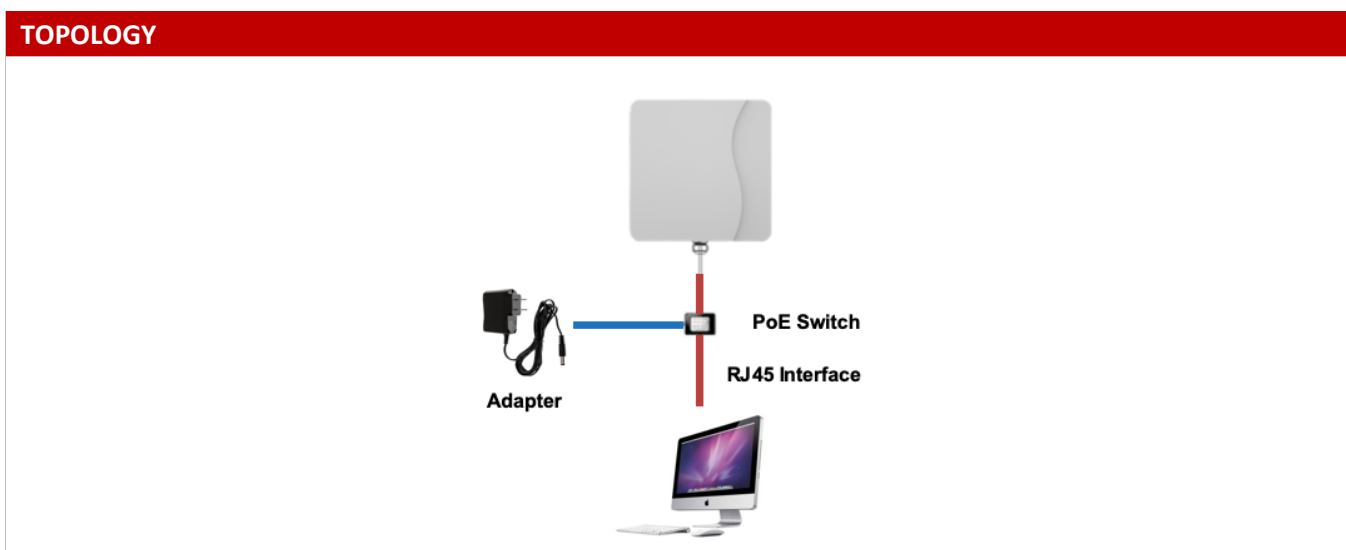
IP67



The CP680 from BTI WIRELESS is a high-performance outdoor LTE CPE. The product provides a high throughput data transmission network for residential, commercial and enterprise users. Customers enjoy an easy plug & play broadband access solution and large area coverage for various network service scenarios.

CELLULAR SPECIFICATIONS		
<b>LTE Standard</b>	3GPP Release 10/ 11, CAT 6	
<b>Peak Throughput</b>	FDD: DL 300 Mbps; UL 75 Mbps	
	TDD: DL 220 Mbps; UL 50 Mbps	
<b>LTE Bands*</b>	Option 1	B1/3/7/8/(17)/20/(28)/38/(40)/41/42/43/48
	Option 2 (Prototype)	B2/4/5/8/12/14/17/25/26/38/41/42/43/48/66
	Option 3	B42/43/48
	Option 4	B7/38/41
<b>Carrier Aggregation (CA) and MIMO</b>	CA: 2 CA Intra- or Inter-band	
	MIMO: DL 2 x 2 MIMO/ 4 X 4 MIMO	
<b>Tx / Rx</b>	1Tx / 4Rx	
<b>Transmit Power</b>	Power Class 3 (23 ± 2dBm)	
<b>LTE Antenna</b>	4 directional antennas	
<b>LTE Antenna Gain</b>	Option 1	700 MHz ~ 1 GHz: 6 dBi 1.7 GHz ~ 2.1 GHz: 7 dBi 2.3 GHz ~ 2.7 GHz: 9 dBi 3.4 GHz ~ 3.8 GHz: 8 dBi
	Option 2	700 MHz ~ 1 GHz: 6 dBi 1.7 GHz ~ 2.1 GHz: 7 dBi 2.3 GHz ~ 2.7 GHz: 9 dBi 3.4 GHz ~ 3.8 GHz: 8 dBi
	Option 3	3.4 GHz ~ 3.8 GHz: 15 dBi
	Option 4	2.5 GHz ~ 2.7 GHz: 13 dBi

\*The frequency bands in () are not included in the conventional sample.



HARDWARE SPECIFICATIONS	
<b>Fixed Interfaces</b>	1 x RJ45 10/ 100/ 1000Mb/s
	1 x SIM slot (1.8V/ 3.0V 2FF)
<b>LED Indicator</b>	4 LED indicators (PWR, NET, SIM, RF signal)
<b>Button</b>	Reset and restore factory setup
<b>Power Supply</b>	24V non-standard POE default
	IEEE 802.3at compatible POE customized
<b>Power Consumption</b>	< 8W
<b>Power Adapter</b>	Input: AC 90 ~ 240V
	Output: DC 24V/ 0.5A
<b>Water and Dustproof</b>	IP67
<b>Dimensions and Mounting</b>	Dimensions: 288 mm x 288 mm x 82 mm   11.3 in x 11.3 in x 3.2 in
	Weight: < 2 kg   4 lbs
	Mounting: rail and wall mounting
<b>Temperature and Humidity</b>	Operating: -30 °C ~ +60 °C   -22 °F ~ +140 °F
	Storage: -40 °C ~ +85 °C   -40 °F ~ +185 °F
	Humidity: 5% ~ 95%

SOFTWARE SPECIFICATIONS	
<b>WAN</b>	Multi-APN support, maximum 4
	IP pass through
	IPv4/IPv6 dual stack
<b>LAN</b>	VLAN 802.1Q
	DHCP server, client
	DNS and DNS proxy
	DMZ
	Multi-cast/ multi-cast proxy
	MAC address filtering
<b>Protocol</b>	Routing: static routing, IGMP proxy
<b>Device Management</b>	TR069
	SNMP v3
	Web UI
	Software upgrade via WEB/ TR069/ FOTA
	USIM PIN management
<b>Routing Mode</b>	Route mode
	Bridge mode
	NAT mode
	Static route

	Port mirror and port forwarding
	IPv4/IPv6 dual stack
<b>VPN</b>	IPsec
	PPTP
	GRE tunnel (L2/L3)
	L2TPv2 and L2TPv3
	VPN pass-through
<b>Security</b>	Firewall
	MAC address filtering
	IP address filtering
	URL filtering
	Access control
	HTTPS login from WAN
	Dos attack protection
	2 level of user authority
<b>Reliability</b>	Watchdog for automatic recovery
	Auto rollback to previous version when upgrade fails

## APPENDIX-DELIVERS

<b>CP680 Outdoor CPE</b>	1 PCS
<b>PoE Injector &amp; Adapter</b>	1 PCS
<b>Accessories for Pole Mounting</b>	1 PCS

Contact Us

[www.btiwireless.com](http://www.btiwireless.com)

[sales@btiwireless.com](mailto:sales@btiwireless.com)