



# 4G/5G Wireless Broadband Solutions



+1 (714) 230-8333



[www.btiwireless.com](http://www.btiwireless.com)



[sales@btiwireless.com](mailto:sales@btiwireless.com)

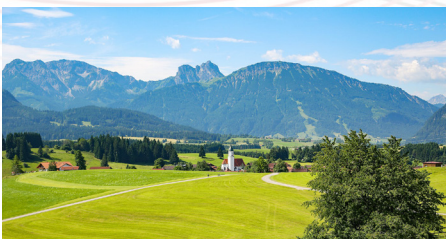
# 4G/5G Wireless Broadband Solutions Provider



BTI Wireless provides flexible and robust radio access network solutions to extend the reach and accelerate the growth of high-speed broadband service in rural, suburban and urban areas, as well as boost our clients' operational efficiency. Our comprehensive range of 4G LTE and 5G NR products are ideally suited for residential, commercial, and enterprise users. With 20 years of experience with small cell and radio technology and a mature R&D team, BTI offers customized OEM/ODM/JDM services that meet the clients' requirements.

Today, Open RAN (O-RAN) and CBRS are increasingly important in the telecommunications industry. With advanced O-RAN architecture and a distributed design, BTI can provide a high-performance, reliable and easy-to-maintain 4G/5G radio access network that supports today's technology and tomorrow's network evolution. BTI also provides diversified 4G/5G CPE terminals tailored to diverse applications (e.g., FWA, Industrial use-cases) to help clients improve network experience, reduce OPEX, and accelerate digital transformation.

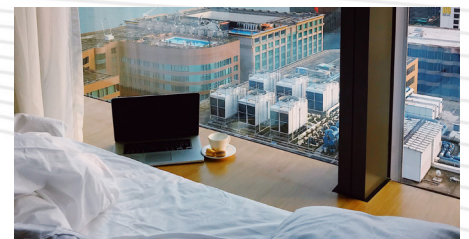
## Use Cases



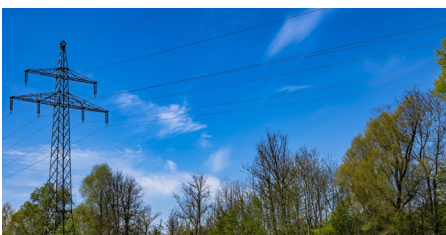
Rural Broadband



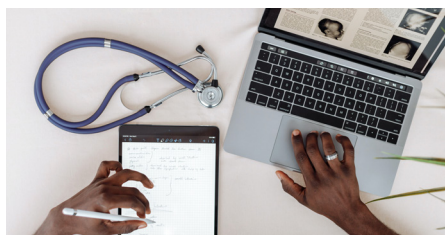
Education



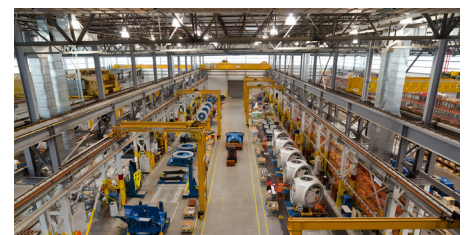
Hospitality



Utility



Healthcare

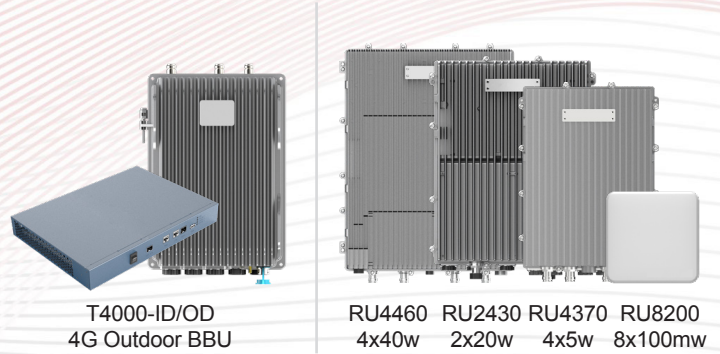


Industry

# BTI Wireless LTE Distributed eNodeB

BTI provides an industry-leading distributed eNodeB that supports 3GPP standard frequency bands, including CBRS and BRS, with radio head power options from 100mW to 40W.

Based on the advanced distributed architecture, the eNB lineup achieves multi-carrier, high throughput and also supports future 5G upgrade.



## Key Features



### Superb Performance

- Supports 4x4 MIMO
- Max 3 LTE Carriers per BBU
- Max 128 RRC-connected & 256 RRC per Carrier



### Diverse Scenarios

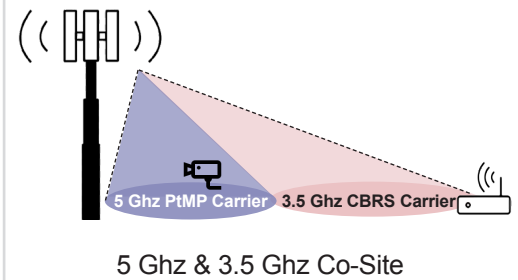
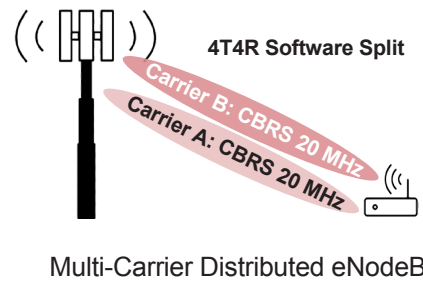
- Indoor & Outdoor, RRU Cascading
- DAS+LTE Hybrid Networking
- 3.5 Ghz + 5 Ghz CBRS+PtMP Co-site



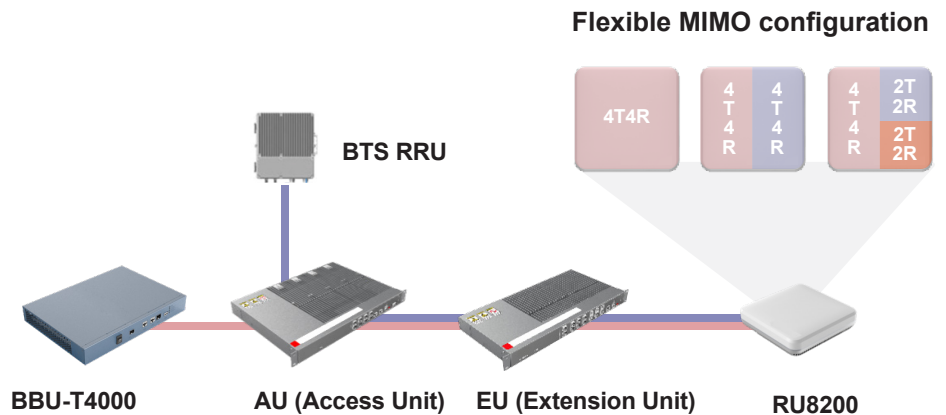
### Smooth 5G Evolution

- Open RAN Compliance
- Compatible with CPRI & eCPRI Interface
- Software Upgrade to eCPRI

## Highlight 1: Provide Higher THP and Larger Site Capacity



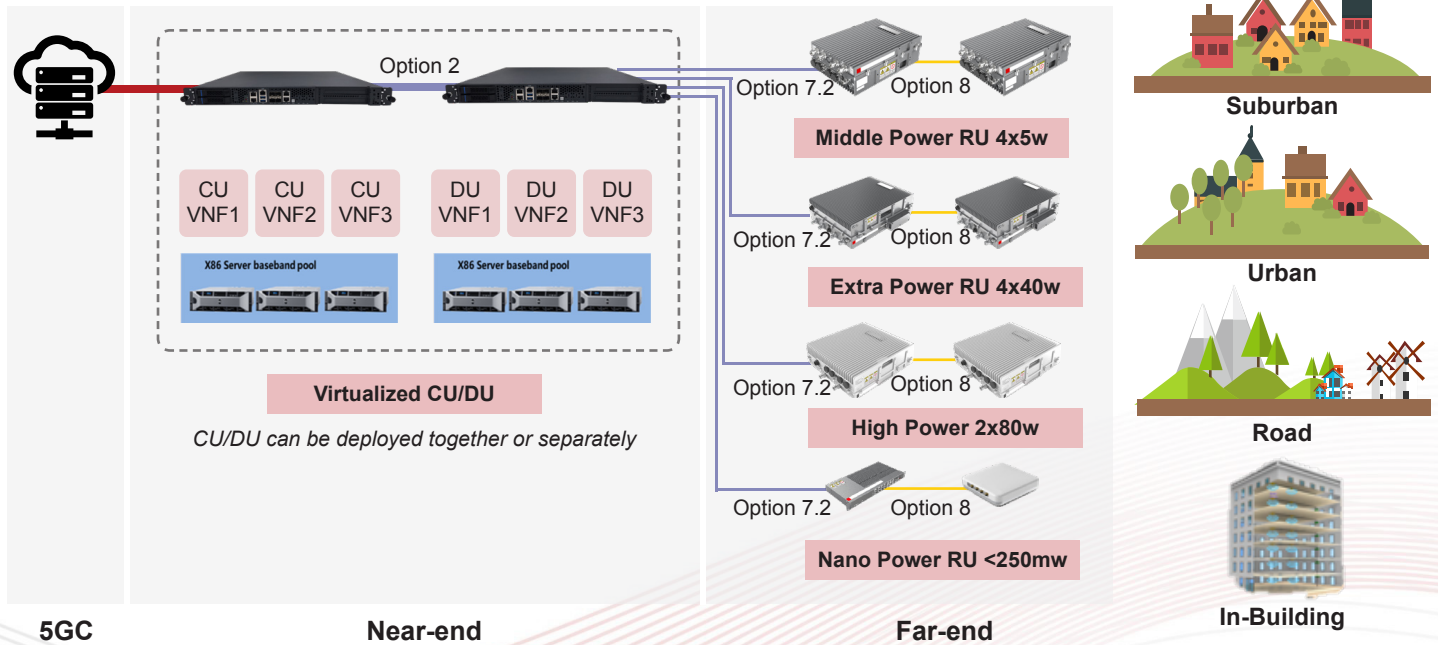
## Highlight 2: Fully Digital Design, Ultra-wide-band Indoor Experience



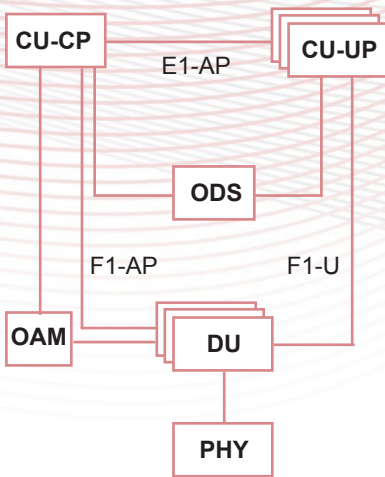
- CBRS & DAS Hybrid Networking
- Flexible MIMO Configuration
- Supports 4x4 MIMO High Capacity
- 3GPP and 5G Evolution

Based on the Open RAN architecture and industry-leading radio capabilities, BTI provides end-to-end 5G CU/DU/RU solutions and customization service, including option 2, option 7.2, option 8 different split modes, to meet the unique 5G needs of our global customers.

## 5G Network Topology



## NR Protocol Stack



## CU/DU Platforms



**O-RAN X86 Platform**

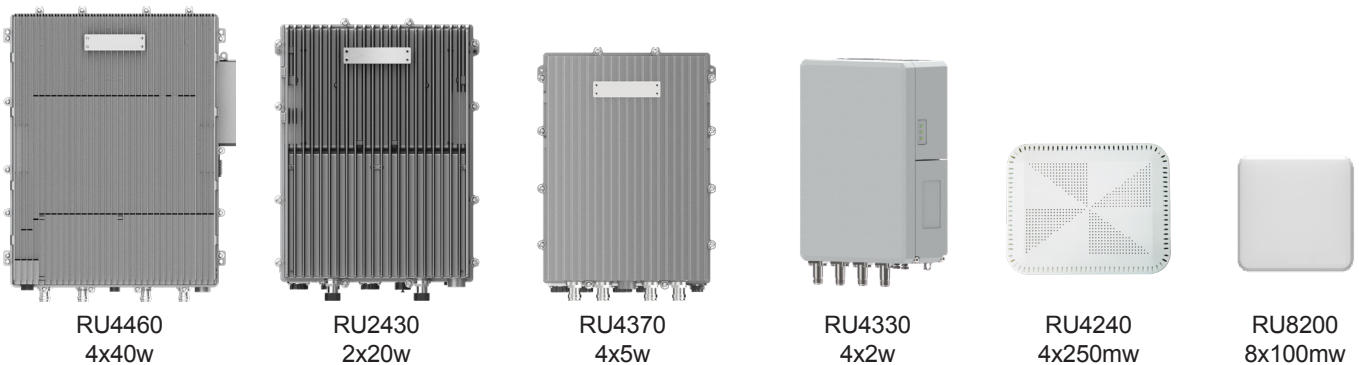


ARM (NXP LX2160A)  
XLINX FPGA ARM (NXP LA12xx)

**O-RAN ARM Platform**

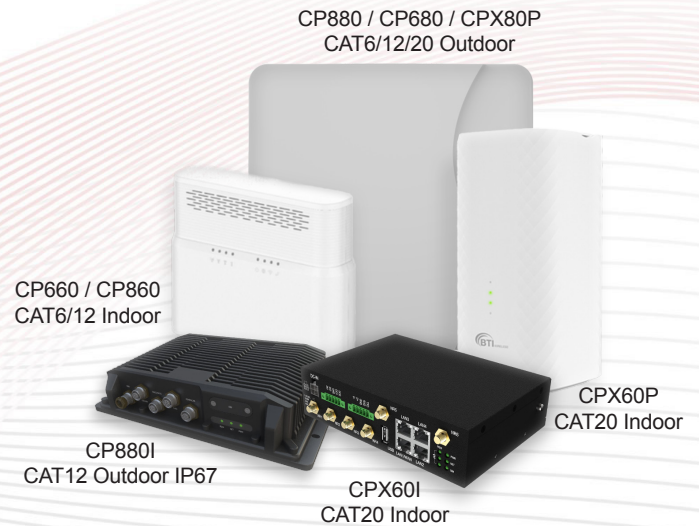
- 3GPP Release 15
- SA/NSA Networking Architecture
- Up to 100 MHz System Bandwidth
- 4x4 MIMO/2x2 MIMO
- 400 Active Users x 4 Cells
- Supports MOCN/MORAN
- DL ≥ 1.5 Gbps, UL ≥ 260 Mbps
- Intel® Xeon® D-2177NT Processor 1.90 GHz (14C/28T, 105W)
- ARM LX2160A + XLINX/NXP LA12xx
- Option 7.2 and Option 2

## 5G Distributed Remote Units



# BTI Wireless 5G and LTE CPE Family

BTI WIRELESS provides flexible, stable and easy-setup 5G and LTE CPE products to meet the growing demand for wireless network connectivity.



## 5G & LTE CPE Key Features



### Superb Performance

- Massive MIMO
- High-speed data transmission
- 5G/4G dual-mode plug-in
- Gigabit-level broadband wireless access



### Security & Reliability

- VPN/IP passthrough
- Supports PIN lock



### Intelligent O&M

- Web, TR069 & SNMP based device management
- WebGUI/CLI

## 5G CPE Products

The 5G Series CPE is designed to satisfy the growing need for a high-speed networking experience.

All products in this series are dual-mode 5G NR and LTE-A, and support both SA and NSA networking modes.



### CPX60P

- 5G CAT 20 Indoor CPE, Wi-Fi 6
- Omni Antenna
- 3-5 dBi
- Qualcomm X55



### CPX80P

- 5G CAT 20 Outdoor CPE
- Directional Antenna
- 6-7.5 dBi
- Qualcomm X55

\*Frequency bands can be customized, each device may not support all band combinations.

The outdoor LTE Series CPE has high-gain directional antennas and supports multi-band intra and inter band CA with high download speeds.

The indoor LTE Series CPE supports both 2.4 GHz and 5 GHz simultaneously and meets IEEE 802.11a/b/g/n/ac standards. It provides optimized high data throughput and a wide area of coverage for residential, commercial and enterprise users while supporting multiple services (Data, VoIP, VoLTE, etc.)



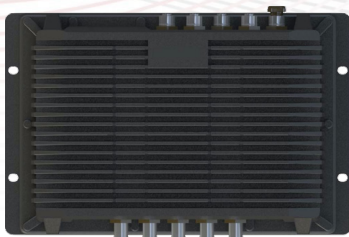
### CP880

- LTE CAT 12 Outdoor CPE
- 2T4R with High Gain Antenna 16dbi
- \*Band 1/3/7/8/17/20/38/41/42/43/48



### CP860

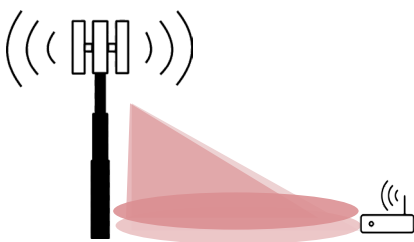
- LTE CAT 12 Indoor CPE
- 2T4R with High Gain Antenna 5dbi
- Wi-Fi 802.11 a/b/g/n/ac
- \*Band 1/3/7/8/17/20/38/41/42/43/48



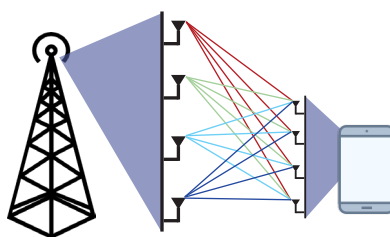
### CP880I

- LTE CAT 12 Outdoor IP67
- Support GE/RS232/RS485/DIDO
- LTE 2T2R, External Antenna
- IEEE802.11a/b/g/n/ac Wi-Fi

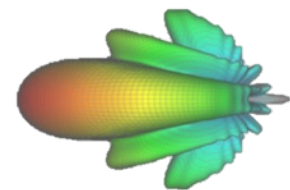
## Highlights



**Multi-Band  
Intra and Inter Band CA**



**Downlink 4x4 MIMO  
Uplink 2x2 MIMO**



**4 High-Gain  
Antennas**

*\*Frequency bands can be customized, each device may not support all band combinations.*